



STELLAR AFRICAGOLD - 18KM COMBINED MULTIPLE GOLD-ANOMALOUS TRENDS IDENTIFIED AT ZUÉNOULA PERMIT, CÔTE D'IVOIRE

Vancouver, BC – May 25, 2026 Stellar AfricaGold Inc. (“Stellar” or the “Company”) (TSXV: SPX, TGAT: 6YP and FSX: 6YP) provides the following update on the exploration progress at the Stellar-MetalsGrove Joint Venture Zuénoula Gold Project, Cote d’Ivoire.

Highlights

- **Multiple gold anomalous trends with a combined strike length of approximately 18km have been identified from three major gold anomalous areas** by broad-spaced (400m x 400m, 200m x 200m) soil sampling results across the eastern portion of the Zuénoula permit.
 - **Prospect 55 and NE extension: approximately 9km strike length**
 - **Central Prospect and NE-SW extension: approximately 4km strike length**
 - **Konezra Prospect and NE extension: approximately 5km strike length**
- **The Fifty-Five Prospect and NE extension trends strike northeast** with a peak soil value of **1,242 ppb Au (1.24 g/t Au)** returned from the permit boundary.
- In addition to the previously announced **potential drill target in Fifty-Five Prospect area** (see *News Release May 13, 2026*), a further potential drill target is defined in the **Central Prospect** area defined by **NE-trending clusters of gold anomalous soil samples, greater than 3.5 km-long** and open to the northeast with assays pending.
- **The NE-orientation of multiple gold anomalous trends is parallel to major regional structures**, increasing confidence in the project’s gold discovery potential.
- **Three sampling crews are currently working** to complete multiple expansive 200m x 50m infill soil sampling programs, with **an additional 1,100 soil samples scheduled on Zuénoula Permit.**
- **Auger drilling program considered feasible during the coming wet season (June – September)** providing the potential for continued news flow during the wet season.
- **Definition of multiple potential drill targets by October 2026 is considered highly probable**, with drilling expected to commence at the start of the dry season.
- Assay results have been received for **1,617 soil samples**, with assays for a further **388 soil samples pending**

About the Stellar-MetalsGrove Joint Venture Zuénoula Gold Project, Cote d’Ivoire.

The Stellar-MetalsGrove Zuénoula Gold Project is a joint venture exploration project between Stellar’s Ivorian subsidiary Aucrest SARL (“Aucrest”) and MetalsGrove Mining Ltd.’s Ivorian subsidiary MetalsGrove CDI Pty Ltd (MetalsGrove) to advance Stellar’s 395.78 square kilometer early-stage exploration permit called Zuénoulain Côte d’Ivoire (see Figure 2 below). Pursuant to the joint venture agreement MetalsGrove, the project operator, may earn up to a 50% interest in the Zuénoula Gold Project by incurring US\$3,000,000 in exploration expenditures and up to an 80% interest in the Zuénoula Gold Project by incurring a total of US\$6,000,000 in exploration expenditures. (For further details of the Stellar-MetalsGrove Joint Venture Agreement see Stellar news release December 9, 2025.)

Stellar Management Commentary

Stellar President and CEO J. François Lalonde commented:

*“These latest soil sampling results continue to highlight the **strong gold discovery potential** emerging at our Zuénoula permit in central-west Côte d’Ivoire”*

*“The emerging **18km combined multiple northeast-trending gold anomalous trends**, including a **peak soil sample assay result of 1.24 g/t gold** located near the border of the Zuénoula permit, provides increasing confidence in the general northeast anomalous trend and reinforcing the broader **district-scale potential** of the Zuénoula permit.”*

*“With three field crews currently completing expansive infill soil sampling programs and further assay results pending, we believe the Stellar-MetalsGrove Joint Venture Zuénoula Gold Project is rapidly advancing towards the **definition of multiple potential drill targets ahead of planned drilling activities later this year.**”*

MULTIPLE NORTHEAST-TRENDING GOLD ANOMALOUS TRENDS IDENTIFIED

Stellar is pleased to announce that 18km combined **multiple northeast-trending gold anomalous trends (Figure 1)** have been identified from **three major gold anomalous areas** by broad-spaced soil sampling programs completed on 400m x 400m and 200m x 200m spacing across the eastern portion of the **Zuénoula Permit in Côte d’Ivoire**.

At the **Central Prospect**, a further potential drill target has been identified from a **northeast-trending cluster of gold anomalous soil samples (see Figure 2 and Table 1)** over greater than **3.5 km-long** which remains **open to the northeast**. The NE orientation of the soil anomalism is interpreted to reflect favourable structural controls associated with major regional fault systems in this highly prospective greenstone belt. Importantly, the general anomalous trends remain **open to the northeast** reinforcing the broader district-scale exploration potential of the Zuénoula Permit.

- **The Fifty-Five Prospect and NE extension** stretches for approximately **9km**, and includes a **peak soil result of 1,242 ppb Au (1.24 g/t Au)** located near the boundary of the Zuénoula Permit. The anomalous trends remain **open to the northeast, reinforcing the broader district-scale exploration potential across MetalsGrove’s strategic landholding position**.
- **The Central Prospect and NE-SW extension** stretch for approximately **4km**. A **further potential drill target has been identified from a +3.5 km-long northeast-trending cluster of gold anomalous soil samples (Figure 2)** which remains **open to the northeast**. The NE-orientation of the soil anomalism is interpreted to reflect favourable structural controls associated with major regional fault systems in this highly prospective greenstone belt.
- **The Konezra Prospect and NE extension** stretches for approximately **5km from current sample spacing of 400m x 400m** and is pending further infill sampling.

The Joint Venture has integrated completed **high-resolution LiDAR and orthophoto survey data imaging** into the exploration interpretation process to assist with topographical analysis, drainage interpretation, geochemical dispersion assessment and planning of future infill soil sampling and

auger drilling traverses. It is noteworthy that on **Figure 2** most of the very high soil sample results are located on the crests of the topography.

Three field crews are currently advancing multiple expansive 200m x 50m infill soil sampling programs designed to tighten target definition ahead of drilling, with approximately 1,500 additional soil samples scheduled. Assay results have now been received for 1,617 soil samples, with a further 388 samples pending laboratory analysis.

MetalsGrove, the Zuénoula Joint Venture Operator, considers that **auger drilling** during the upcoming wet season (June to September) to be feasible following positive site access assessment by the JV Exploration Manager. Auger drilling is expected to provide important geological and geochemical information beneath transported cover and assist in refining drill targeting ahead of planned RC and/or diamond drilling programs during the dry season.

Next Phases of Work

The Joint Venture has planned the following next phases of exploration programs to advance the identification of additional gold exploration targets:

- Central Prospect: Infill soil sampling on 200m x 50m grid (500 samples)
- Fifty-Five Prospect: Infill soil sampling on 200m x 50m grid (630 samples)

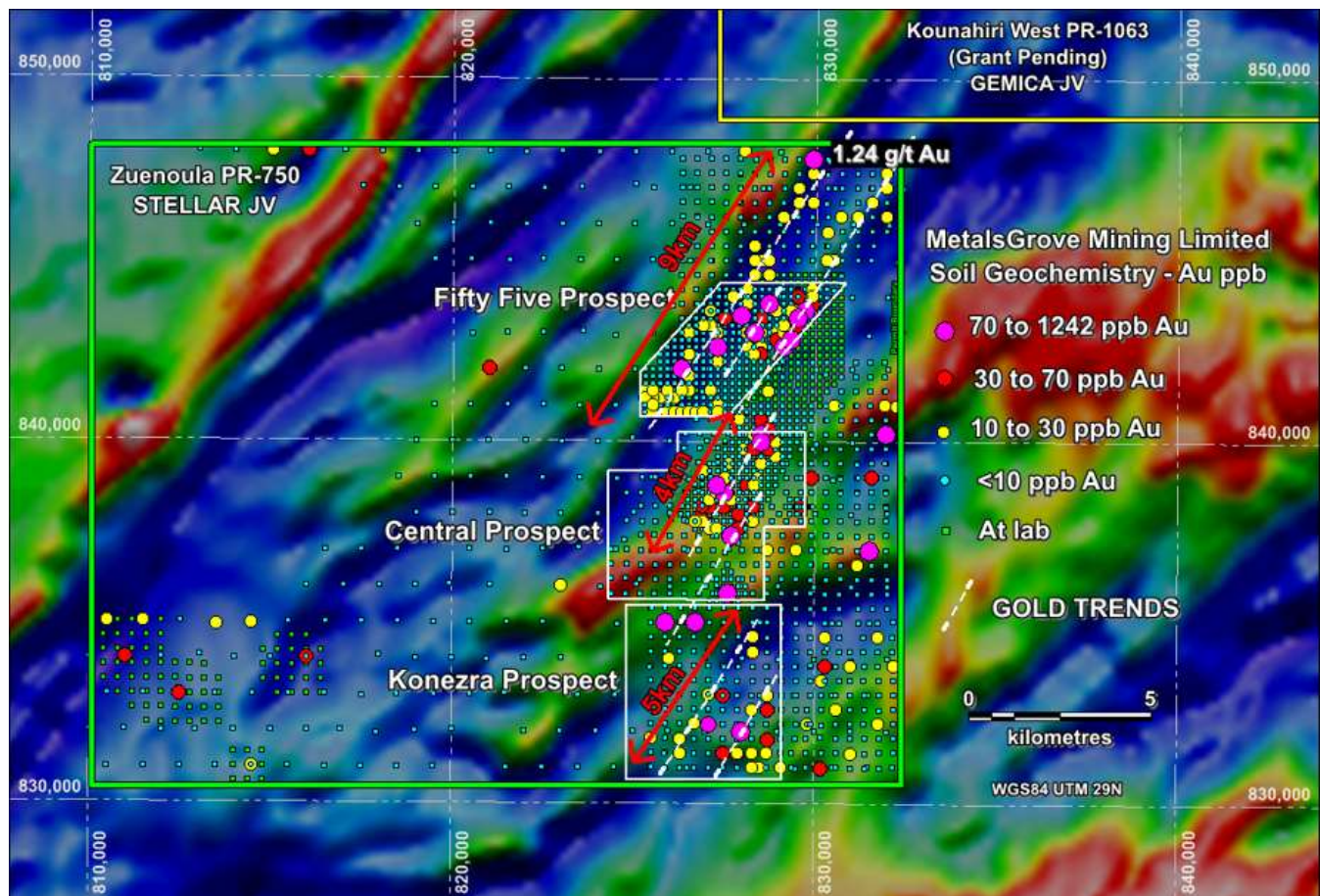
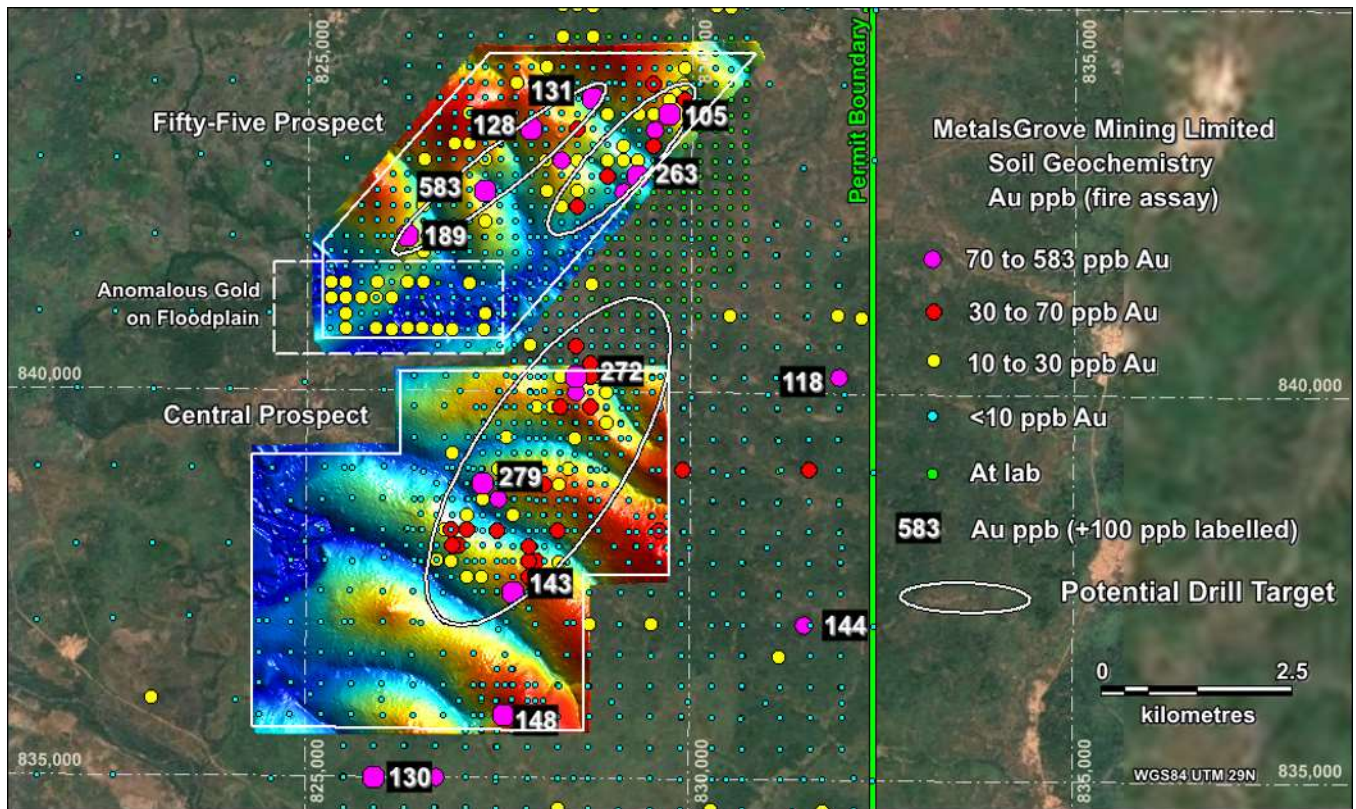


Figure 1. Zuénoula Gold Soil Geochemistry on Aeromagnetics (RTP) with Gold Trends Highlighted



**Figure 2. Potential drill targets defined at Zuénoula on LiDAR topographical image;
*Red and Orange: high ground. Blue: low ground with transported soil cover***

**Table 1. Zuénoula Permit –
 Soil Samples Assaying Above 70 ppb Au**

Sample ID	Zone	East	North	Au ppb (FA)
KN1566	WGS84_29N	829900	847800	1242
KN0551	WGS84_29N	827300	842600	583
KN1364	WGS84_29N	827303	838804	297
KN1487	WGS84_29N	828499	840199	272
KN0741	WGS84_29N	829299	842800	263
KN0955	WGS84_29N	827102	832199	200
KN0670	WGS84_29N	826299	842001	189
KN0276	WGS84_29N	827600	835800	148
KN0089	WGS84_30N	169324	836993	144
KN1338	WGS84_29N	827700	837399	143
KN0793	WGS84_29N	828697	843798	131
KN1095	WGS84_29N	825906	834994	130
KN0768	WGS84_29N	827901	843399	128
KN1257	WGS84_30N	169802	840202	118
KN0802	WGS84_29N	829700	843601	105
KN1470	WGS84_29N	828499	839993	95
KN1423	WGS84_29N	827496	838597	84
KN0783	WGS84_29N	829504	843399	80
KN0708	WGS84_29N	829100	842599	79
KN1112	WGS84_29N	826699	834999	79
KN0749	WGS84_29N	828301	843001	77
KN0045	WGS84_29N	828001	831999	72

Qualified Person

The technical information contained in this release has been reviewed and approved by Mr. Robert Perring, a current member of the Australian Institute of Geoscientists (MAIG) and Exploration Manager of MetalsGrove Mining Limited. Mr. Perring is a *Qualified Person* under National Instrument 43-101.

About Stellar Africagold Inc.

Stellar AfricaGold Inc. is a Canadian precious metal exploration company focused on precious metals in North and West Africa, with active programs in Morocco and Côte d'Ivoire. Stellar's principal exploration projects are its advancing gold discovery at the Tichka Est Gold Project in Morocco, and its early-stage exploration Zuénoula Gold Project in Côte d'Ivoire which is operated in Joint Venture with MetalsGrove Mining Ltd subsidiary, MetalsGrove CDI Pty Ltd.

The Company is listed on the TSX Venture Exchange symbol TSX.V: SPX, the Tradedate Exchange TGAT: 6YP and the Frankfurt Stock Exchange FSX: 6YP.

The Company maintains its head office in Vancouver, BC and has a country office in Marrakech, Morocco.

QA/QC

JORC Code, 2012 Edition – Table 1
Section 1- Sampling Techniques and Data

Criteria	JORC Code Explanation	Commentary
Sampling Techniques	<ul style="list-style-type: none"> • <i>Nature and quality of sampling (e.g. cut channels, random chips, or specific specialized industry standard measurement tools appropriate to the minerals under investigation, such as downhole gamma sondes, or handheld XRF instruments, etc.) These examples should not be taken as limiting the broad meaning of sampling.</i> • <i>Include reference to measures taken to ensure sample representivity and the appropriate calibration of any measurement tools or systems used.</i> • <i>Aspects of the determination of mineralisation that are Material to the Public Report.</i> <p><i>In cases where 'industry standard' work has been done, this would be relatively simple (e.g. 'reverse circulation drilling was used to obtain 1 m samples from which 3 kg was pulverised to produce a 30 g charge for fire assay'). In other cases, more explanation may be</i></p>	<p>No drilling has been undertaken on Zuénoula PR-750</p> <p>All soil samples collected on Zuénoula PR-750 have been analysed for gold by fire assay at Bureau Veritas laboratory in Abidjan, Côte d'Ivoire.</p> <p>SOIL SAMPLING STAGES</p> <ul style="list-style-type: none"> • Stage 1: Initial, permit-wide, broad-spaced soil sampling on 1000m x 1000m grid • Stage 2: Gold anomalous clusters and trends defined by multiple anomalous soil samples (+20ppb Au) are then infilled with soil samples collected on 400m x 400m grid • Stage 3: Coherent gold soil anomalies are then infilled with soil samples collected on 200m x 200m grid • Stage 4: Higher density 200m x 50m soil sampling to sharpen definition of gold soil anomalies • Stage 5: Augering and trenching of coherent gold soil anomalies • Stage 6: Drill testing of gold soil and auger

	<p><i>required, such as where there is coarse gold that has inherent sampling problems. Unusual commodities or mineralisation types (e.g. submarine nodules) may warrant disclosure of detailed information.</i></p>	<p>anomalies.</p> <p>SOIL SAMPLING PROCEDURES</p> <ul style="list-style-type: none"> • MGA has contracted the experienced consulting group SEMS Exploration Services (SEMS) to conduct all soil sampling • Up to four sampling crews may be active at any one time • The MGA Exploration Manager was onsite at the start of the field program to instruct the sampling crew on the Standard Sampling Procedure required by MGA • MGA provided SEMS Exploration Services with an Excel table listing the designated sample point locations using WGS-84 UTM zone 29N coordinates • Each soil sample is collected from within 20 metres of the designated sample point, with the actual sample point then recorded • At each sample point: 1) the organic rich soil is brushed away, 2) a 40cm deep hole dug and the sample collected by taking a channel-cut along the bottom 20cm of the hole, 3) 1000g of the minus 2mm sieved fraction of each sample is collected from the sample point, 4) gold is determined by fire assay (LDL 2ppb) • Duplicate samples are collected every 20th sample, certified reference material (CRM) inserted every 20th sample, and blanks inserted every 20th sample. • Samples are stored at the secure SEMS field compound in Zuénoula prior to transport to Bureau Veritas in Abidjan of gold analysis.
<p>Drilling Techniques</p>	<ul style="list-style-type: none"> • <i>Drill type (e.g. core, reverse circulation, open-hole hammer, rotary air blast, auger, Bangka, sonic, etc.) and details (e.g. core diameter, triple or standard tube, depth of diamond tails, face-sampling bit or other type, whether core is oriented and if so, by what method, etc).</i> 	<ul style="list-style-type: none"> • No drilling has been undertaken.
<p>Drill Sample Recovery</p>	<ul style="list-style-type: none"> • <i>Method of recording and assessing core and chip sample recoveries and results assessed.</i> • <i>Measures taken to maximise sample recovery and ensure representative nature of the samples.</i> • <i>Whether a relationship exists between sample recovery and grade, and whether sample bias may have occurred due to preferential loss/gain of fine/coarse material.</i> 	<ul style="list-style-type: none"> • No drilling has been undertaken.

<p>Logging</p>	<ul style="list-style-type: none"> • Whether core and chip samples have been geologically and geotechnically logged to a level of detail to support appropriate Mineral Resource estimation, mining studies and metallurgical studies. • Whether logging is qualitative or quantitative in nature. Core (or costean, channel, etc.) photography. • The total length and percentage of the relevant intersections logged. 	<ul style="list-style-type: none"> • No drilling has been undertaken • Soil samples are comprehensively logged for a range of parameters including colour, soil horizon, sample weight, slope, dominant grain size (clay, silt, sand), general topography, residual or transported, proximity to artisanal workings, other ground disturbances such as field plowing, and general land use (grassland, plantation, crop, etc.).
<p>Sub-sampling Techniques and Sample Preparation</p>	<ul style="list-style-type: none"> • If core, whether cut or sawn and whether quarter, half or all core taken. • If non-core, whether riffled, tube sampled, rotary split, etc. and whether sampled wet or dry. • For all sample types, the nature, quality and appropriateness of the sample preparation technique. • Quality control procedures adopted for all sub-sampling stages to maximise representivity of samples. • Measures taken to ensure that the sampling is representative of the in-situ material collected, including, for instance, results for field duplicate/second-half sampling. • Whether sample sizes are appropriate to the grain size of the material being sampled. 	<ul style="list-style-type: none"> • No drilling has been undertaken • No sub-sampling of the 1000g soil samples is undertaken prior to the sample arriving at Bureau Veritas laboratory • At Bureau Veritas, the entire 1000g sample is pulped prior to the laboratory taking a 50g split for lead collection fire assay determination of gold concentration.
<p>Quality of Assay Data and Laboratory Tests</p>	<ul style="list-style-type: none"> • The nature, quality and appropriateness of the assaying and laboratory procedures used and whether the technique is considered partial or total. • Forgeophysical tools, spectrometers, handheld XRF instruments, etc., the parameters used in determining the analysis, including instrument make and model, reading times, calibration factors applied, and their derivation, etc. • Nature of quality control procedures adopted (e.g. standards, blanks, duplicates, external laboratory checks) and whether acceptable levels of accuracy (i.e. lack of bias) and precision have been established. 	<ul style="list-style-type: none"> • Bureau Veritas is an internationally accredited assay laboratory located in Abidjan, Cote d'Ivoire. • Assay results for all samples presented in the announcement were determined by fire assay (Lab Code: FE450, LDL 2ppb), which is a total gold extraction method for analysis. • The lower detection limit (LDL) of 2ppb is considered appropriate for greenfields, early stage, exploration soil sampling • Fire assay gold is considered one of the most reliable assay techniques for gold analyses.
<p>Verification of Sampling and Assaying</p>	<ul style="list-style-type: none"> • The verification of significant intersections by either independent or alternative company personnel. • The use of twinned holes. • Documentation of primary data, data entry procedures, data verification, 	<p>FIRE ASSAY ANALYSIS</p> <ul style="list-style-type: none"> • All samples have been analysed for gold by fire assay at Bureau Veritas laboratory in Abidjan, Cote d'Ivoire • The 1000g -2mm sample collected in the field is analysed for gold by fire assay (Lab

	<p><i>data storage (physical and electronic) protocols.</i></p> <ul style="list-style-type: none"> • <i>Discuss any adjustments to assay data.</i> 	<p>Code: FE450, LDL 2ppb)</p> <ul style="list-style-type: none"> • At the laboratory, the 1000g -2mm sample is dried and pulverised to 85% passing 75 microns. • This sample pulp is then mixed with a combination of chemical reagents, which when heated to high temperatures results in the formation of a lead button and slag. The lead button that contains the precious metals (including gold) is cupelled at high temperature. The lead is adsorbed by the cupel leaving behind a bead that contains the precious metals. • The bead is acid digested and analysed by AAS, with a lower detection limit of 2ppb Au
Location of Data Points	<ul style="list-style-type: none"> • <i>Accuracy and quality of surveys used to locate drillholes (collar and down-hole surveys), trenches, mine workings and other locations used in Mineral Resource estimation.</i> • <i>Specification of the grid system used.</i> • <i>Quality and adequacy of topographic control.</i> 	<ul style="list-style-type: none"> • A handheld GPS is used to locate the soil data positions, with a +/-5m vertical and horizontal accuracy • Sample locations (UTM WGS-84 zone 29N) and sample descriptions are noted on a standard form in the field and entered on a computer. • GPS measurements of sample positions are sufficiently accurate for exploration targeting gold systems.
Data Spacing and Distribution	<ul style="list-style-type: none"> • <i>Data spacing for reporting Exploration Results.</i> • <i>Whether the data spacing and distribution is sufficient to establish the degree of geological and grade continuity appropriate for the Mineral Resource and Ore Reserve estimation procedure(s) and classifications applied.</i> • <i>Whether sample compositing has been applied.</i> 	<ul style="list-style-type: none"> • An 1,000m X 1,000m offset grid pattern has been adopted for the entire permit area, excluding areas of irrigated sugar cane and villages. • Broad-spaced soil sampling (1000m by 1000m) and low level gold fire assay analysis (LDL 2ppb) is considered an effective technique for identifying and delimiting gold anomalous clusters and trends, which are then followed up with higher density sampling at 400m X 400m, 200m x 200m, and in some areas 200m x 50m, as the next phases of sampling ahead of trenching, augering, and drill testing of coherent gold soil anomalies.
Orientation of data in relation to geological structure	<ul style="list-style-type: none"> • <i>Whether the orientation of sampling achieves unbiased sampling of possible structures and the extent to which this is known, considering the deposit type.</i> • <i>If the relationship between the drilling orientation and the orientation of key mineralised structures is considered to have introduced a sampling bias, this should be assessed and reported if material.</i> 	<ul style="list-style-type: none"> • The sample location configuration has been deliberately planned to avoid directional bias.

Sample security	<ul style="list-style-type: none"> <i>The measures taken to ensure sample security.</i> 	<ul style="list-style-type: none"> 1000g of -2mm sieved fraction of soil samples are collected in plastic bags, assigned individual sample numbers and transported to the secure SEMS compound in Zuénoula Samples have been analysed by fire assay at Bureau Veritas in Côte d'Ivoire and were personally transported to the laboratory by a senior member of the MetalsGrove Abidjan-based exploration team.
Audits or Reviews	<ul style="list-style-type: none"> <i>The results of any audits or reviews of sampling techniques and data.</i> 	<ul style="list-style-type: none"> The sampling and assay techniques adopted by MetalsGrove has been effectively used in the Vavoua-Kounahiri district, and more widely in Côte d'Ivoire, to define drill targets and it is considered an effective initial approach for defining gold anomalous lithogeochemical trends.

Section 2 - Reporting of Exploration Results
(Criteria listed in the preceding section also apply to this section.)

Criteria	JORC Code Explanation	Commentary
Mineral Tenement and Land Tenure Status	<ul style="list-style-type: none"> <i>Type, reference name/number, location and ownership, including agreements or material issues with third parties such as joint ventures, partnerships, overriding royalties, native title interests, historical sites, wilderness or national park and environmental settings.</i> <i>The security of the tenure held at the time of reporting, along with any known impediments to obtaining a licence to operate in the area.</i> 	<ul style="list-style-type: none"> Following the acquisition of the three Gemica joint venture (JV) permits PR-454 (granted), PR-1063 (application) and PR-1102 (application) in Côte d'Ivoire, MetalsGrove entered another JV with TSX-V listing company Stellar AfricaGold Inc. (Stellar) on PR-750 Zuénoula. Zuénoula PR-750 was granted on 17 April 2024 for an initial four-year period, renewable for two additional three-year periods. The Vavoua permit is located with Kounahiri West, Vavoua West and Zuénoula permits occupy a combined area of 1,315 km², strategically situated along the Abujar–Napié gold trend within the Oumé–Fetekro Birimian greenstone belt in central west of Côte d'Ivoire, approximately 100 km north of the Abujar gold mine and 160 km south of the Napié gold project.
Exploration Done by Other Parties.	<ul style="list-style-type: none"> <i>Acknowledgement and appraisal of exploration by other parties.</i> 	<ul style="list-style-type: none"> MetalsGrove is not aware of any previous systematic exploration for gold having been conducted within either Zuénoula PR-750, Vavoua PR-454, Vavoua West PR-1102, or Kounahiri West PR-1063
Geology	<ul style="list-style-type: none"> <i>Deposit type, geological setting, and style of mineralisation.</i> 	<ul style="list-style-type: none"> The Vavoua, Vavoua West, Kounahiri West and Zuénoula permits are located in the central west of Côte d'Ivoire at the south edge of the West Africa craton. This region is the world's largest Proterozoic gold-producing region, and Côte d'Ivoire

		<p>contains 35% of the region's Birimian Group rocks, which host multiple multi-million-ounce gold ore systems.</p> <ul style="list-style-type: none"> The GEMICA JV permits and Stellar JV permit, together cover a combined area of 1,315 km², and are strategically situated along the Abujar–Napié gold trend within the Oumé–FetekroBirimian greenstone belt, and are located approximately 100 km north of the Abujar gold mine and 160 km south of the Napié gold project.
Drillhole Information	<ul style="list-style-type: none"> <i>A summary of all information material to the understanding of the exploration results, including a tabulation of the following information for all Material drill holes:</i> <i>easting and northing of the drillhole collar elevation or RL (Reduced Level – elevation above sea level in metres) of the drillhole collar dip and azimuth of the hole</i> <i>down hole length and interception depth hole length.</i> 	<ul style="list-style-type: none"> No drilling results are included in this release.
Data Aggregation Methods	<ul style="list-style-type: none"> <i>In reporting Exploration Results, weighting averaging techniques, maximum and/or minimum grade truncations (e.g., cutting of high grades) and cut-off grades are usually Material and should be stated.</i> <i>Where aggregate intercepts incorporate short lengths of high-grade results and longer lengths of low-grade results, the procedure used for such aggregation should be stated, and some typical examples of such aggregations should be shown in detail.</i> <i>The assumption used for any reporting of metal equivalent values should be clearly stated.</i> 	<ul style="list-style-type: none"> No data aggregation methods were applied to the soil sampling data.
Relationship Between Mineralisation Widthsand Intercept Lengths	<ul style="list-style-type: none"> <i>If the geometry of mineralisation with respect to the drillhole angle is known, its nature should be reported.</i> 	<ul style="list-style-type: none"> Not applicable.

<p>Diagrams</p>	<ul style="list-style-type: none"> • <i>Appropriate maps and sections (with scales) and tabulations of intercepts should be included for any significant discovery being reported. These should include, but not be limited to, a plan view of drillhole collar locations and appropriate sectional views.</i> 	<ul style="list-style-type: none"> • See maps in the body of the report.
<p>Balanced Reporting</p>	<ul style="list-style-type: none"> • <i>Where comprehensive reporting of all Exploration Results is not practicable, representative reporting of both low and high grades and/or widths should be practiced, avoiding misleading reporting of Exploration Results.</i> 	<ul style="list-style-type: none"> • The soil assay data was interpreted by the MGA Exploration Manager who has more than 40 years of gold exploration experience. MGA assay results are also interpreted with reference to the surface geochemical expressions of more than 15 of the major gold discoveries in Cote d'Ivoire.
<p>Other Substantive Exploration Data</p>	<ul style="list-style-type: none"> • <i>Other exploration data, if meaningful and material, should be reported, including (but not limited to): geological observations; geophysical survey results; geochemical survey results; bulk samples – size and method of treatment; metallurgical test results; bulk density, groundwater, geotechnical and rock characteristics; potential deleterious or contaminating substances.</i> 	<ul style="list-style-type: none"> • LiDAR or Laser imaging, Detection, and Ranging is a method for determining ranges by targeting an object or a surface with a laser and measuring the time for the reflected light to return to the receiver. LiDAR may operate in a fixed direction, or it may scan directions in a special combination of 3D scanning. LiDAR on a drone platform is being used at Zuénoula to make high-resolution (3cm resolution) topographical maps. For the survey, SEMS used a DJI Matrix 300 RTK drone mounted with a ZenmuseL@ LiDAR using a flight altitude of 150m AGL. The point cloud density was 94 points/m² with a horizontal accuracy of 5cm and a vertical accuracy of 4cm. The sensor pulse rate was 240,000 laser points per second. Five base reference points were established linked to National Survey Beacons to continuously record x, y and z data for RTK positioning and correction of data and flight trajectory. Data processing was undertaken using an MSI Tomahawk workstation with an Intel Core i9-9900k processor using Dji Terra and Global Mapper Pro software. An optical camera of 20 Megapixel resolution was used to generate, after processing, orthoimages with an accuracy of 1 to 3cm. • Orthophotography (orthophoto) are orthoimages geometrically corrected (orthorectified) to remove distortion from camera tilt and terrain relief. These images have a uniform scale, allowing for direct, accurate measurements of distances, areas, and angles, functioning as a map

		<p>that represents true surface locations. The orthophotography was captured as part of the LiDAR survey using an optical camera of 20 Megapixel resolution.</p> <ul style="list-style-type: none"> Historical Aeromagnetic Data The aeromagnetic images used in this ASX announcement were imaged from gridded aeromagnetic data acquired from US-based company Condor Consulting Inc., who compiled the data from multiple company and Government-sponsored surveys and marketed the data as West African Magnetic Compilation. No metadata was supplied with the gridded data. The gridded aeromagnetic data was imaged by a Consultant Geophysicist in Perth, WA, with each image optimized to characterize the published geology of the Birimian granite and greenstone terrains of Cote d'Ivoire, and to highlight the structural features of these terrains. Each image covers the whole of Cote d'Ivoire and was digitally trimmed from these images for inclusion in this announcement. The data was not imaged as a subset of the original gridded aeromagnetic to optimize the character of the geological features present within the company's Cote d'Ivoire project areas and is only intended to be indicative of the featured that might be highlighted by a high-resolution, project-scale aeromagnetic survey.
FurtherWork	<ul style="list-style-type: none"> <i>The nature and scale of planned further work (e.g. tests for lateral extensions, or depth extensions, or large-scale step-out drilling).</i> <i>Diagrams clearly highlighting the areas of possible extensions, including the main geological interpretations and future drilling areas, provided this information is not commercially sensitive.</i> 	<ul style="list-style-type: none"> Completion of 400m x 400m and 200m x 200m at several prospects. Plotting and interpreting the assay results for the 617 soil samples currently being assayed at Bureau Veritas. Planning and scheduling 200m by 50m infill soil sampling at Fifty-Five Prospect. Searching +50ppb Au sites for quartz vein outcrop and/or float. Sampling termite mounds at gold anomalous soil sites.

Stellar's President and CEO J. François Lalonde can be contacted at +1514-9940654 or by email at lalondejf@stellarafricagold.com. Additional information is available on the Company's website at www.stellarafricagold.com.

On Behalf of the Board
J. François Lalonde
President & CEO

This news release contains “forward-looking statements” within the meaning of applicable Canadian securities laws, including statements which may not have been based solely on historical facts but rather may be based on the Company’s current expectations about future events and results. Where the Company expresses or implies an expectation or belief as to future events or results, such expectation or belief is expressed in good faith and believed to have a reasonable basis.

Forward-looking statements are based on expectations, estimates and projections as at the date of this news release and are subject to known and unknown risks, uncertainties and other factors that may cause actual results or events to differ materially from those expressed or implied. Such risks and uncertainties include, but are not limited to, exploration risk, mineral resource risk, the Company not achieving the production milestones described herein, changes in business plans or commodity prices, failure to obtain regulatory approvals, geopolitical country risk, and the risk factors described in the Company’s most recent Management’s Discussion and Analysis and Annual Information Form, which are available on SEDAR+ at www.sedarplus.ca.

Forward-looking statements are not guarantees of future performance and should not be unduly relied upon. Except as required by law, the Company undertakes no obligation to update or revise any forward-looking statements contained herein.

Neither the TSX Venture Exchange nor its Regulation Services Provider (as that term is defined in the policies of the TSX Venture Exchange) accepts responsibility for the adequacy or accuracy of this release.